



Bowral Garden Club
Coach Trip to
Eryldene at Gordon
and
Lisgar Gardens at Hornsby
Thursday 23 July 2026

Departing Mittagong RSL 8.15 am - Returning approximately 4.30pm

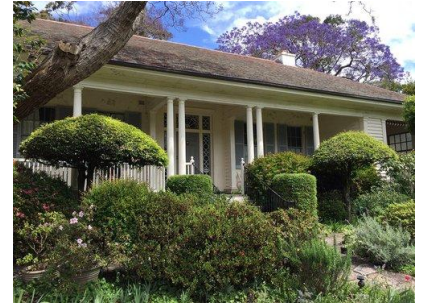
Cost - \$85.00 - includes coach travel, Eryldene *including entry, Visitor Guide Booklet, House Tour, Garden Tour and Morning Tea*, followed by a visit to Lisgar Gardens at Hornsby
 The tour will be restricted to a maximum of 35 passengers.

Please advise of any dietary requirements

The Committee reserves the right to amend the itinerary without notice.



Eryldene In 1913, Eben Gowrie Waterhouse (E G Waterhouse) bought land at Gordon in Sydney's northern suburbs to build a family home which began in 1913 and saw the beginning of the creation of the garden and its many structures. A garden study and walled fountain were built in 1921 followed by a potting shed and pigeon house in 1922, a Chinese-inspired tea house in 1927 and a bold lattice screen and garage in 1936. A temple in the front garden was built at the same time as the house, utilising columns salvaged from Lyons Terrace, Liverpool St, Sydney.



The camellia collection at Eryldene is one of the most historically important in Australia and includes specimens associated with the early history of the settlement of NSW and rare camellias given to the Professor by his international camellia friends - many hybridised and raised from seed by the Professor himself.

There are "plus or minus" 500 camellias in the garden, many growing in tubs of varying sizes allowing for specific needs of water, fertiliser and light to be met and tubs to be relocated when necessary.

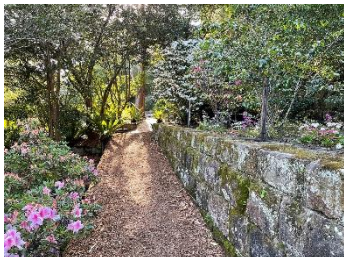
The Professor was a pioneer in camellia research and sought out long forgotten cultivars and planted them for posterity.

The azalea collection at Eryldene is also important – largely because there are many examples of azaleas which are no longer commercially available.



Lunch - please bring a *picnic lunch* to be enjoyed at Lisgar Gardens.

Lisgar Gardens opened to the public in 1968 is a stunning hillside garden. Rich in history it includes more than 90 varieties of camellia blossoming among the stunning green landscape. Lisgar Gardens was originally purchased in 1917 by Dr. Max Cotton from his brother Leo, with the specific plan of creating the gardens. They were sold to Hornsby Shire Council in 1967, with some of the original camellias still existing today. The gardens have been awarded Significant Historic Ornamental Camellia Tree by the International Camellia Society for its tree of crimson red Camellia japonica 'Cassandra', the best surviving specimen of a rare early New South Wales cultivar.



Lisgar's specimen is over 75 years old was among the first in the world to receive the award. 'Cassandra' was listed as a New South Wales cultivar by Sir William Macarthur of Camden Park in the Australian Botanical & Horticultural Gazette of 1849 and is one of the treasures of New South Wales' horticultural heritage.

Camellias are the garden's biggest feature but complemented by other species including rhododendrons, azaleas and gardenias along with native trees and ferns. The gardens also contain a shade house containing fish ponds, a gazebo, three waterfalls, informal lawn areas, picnic tables and even a rainforest walk.

Enquiries / bookings: Ray Bradley (E) rbb1945@bigpond.net.au or (M) 0416 191 905

Payment - no later than Monday 13 July. **No refunds** will be made after that date unless the seat can be resold. Payment may be made by:

1. The **preferred payment method** is by Direct deposit into the Bendigo Bank Account name: Bowral Garden Club Inc. BSB: 633 000 Account no: 200 091 734 Please ensure you include in your reference details - surname and 23 July; or
2. Payment may also be made by **cash** or **credit card** (a small surcharge applies) at the June or July monthly meetings.